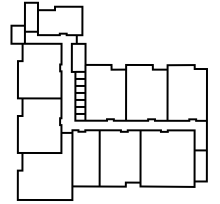
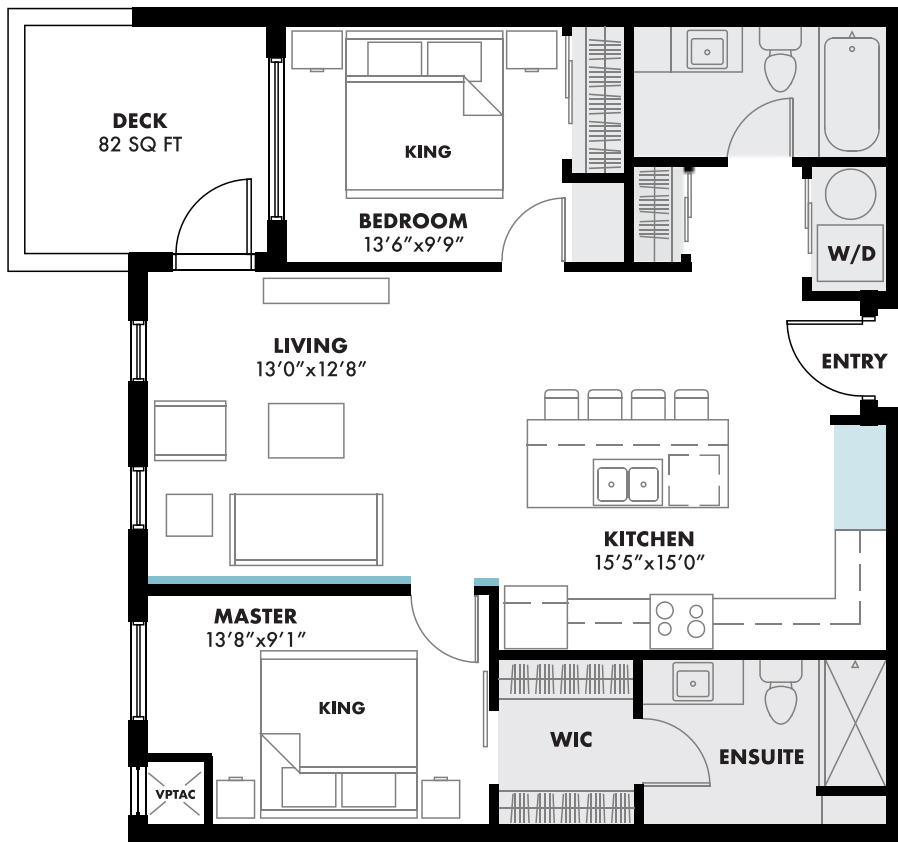




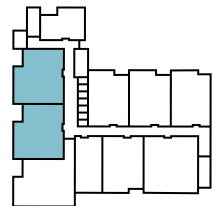
A3

INDOOR LIVING **939 SQ FT** | OUTDOOR LIVING **82 SQ FT** | OL / IL RATIO **9%** | TOTAL LIVING **1021 SQ FT**

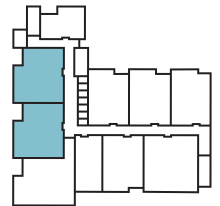
BEDROOMS 2 | BATHROOMS 2



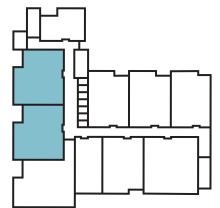
FLOOR SIX



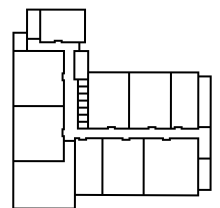
FLOOR FIVE



FLOOR FOUR



FLOOR THREE



FLOOR TWO

- 8' CEILING
- 9' CEILING
- FEATURE WALL UPGRADE
- PANTRY UPGRADE

*VPTAC SIZE AND LOCATIONS MAY VARY. MEASUREMENTS ARE APPROXIMATE AND SUBJECT TO CHANGE

