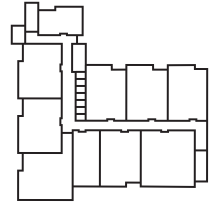
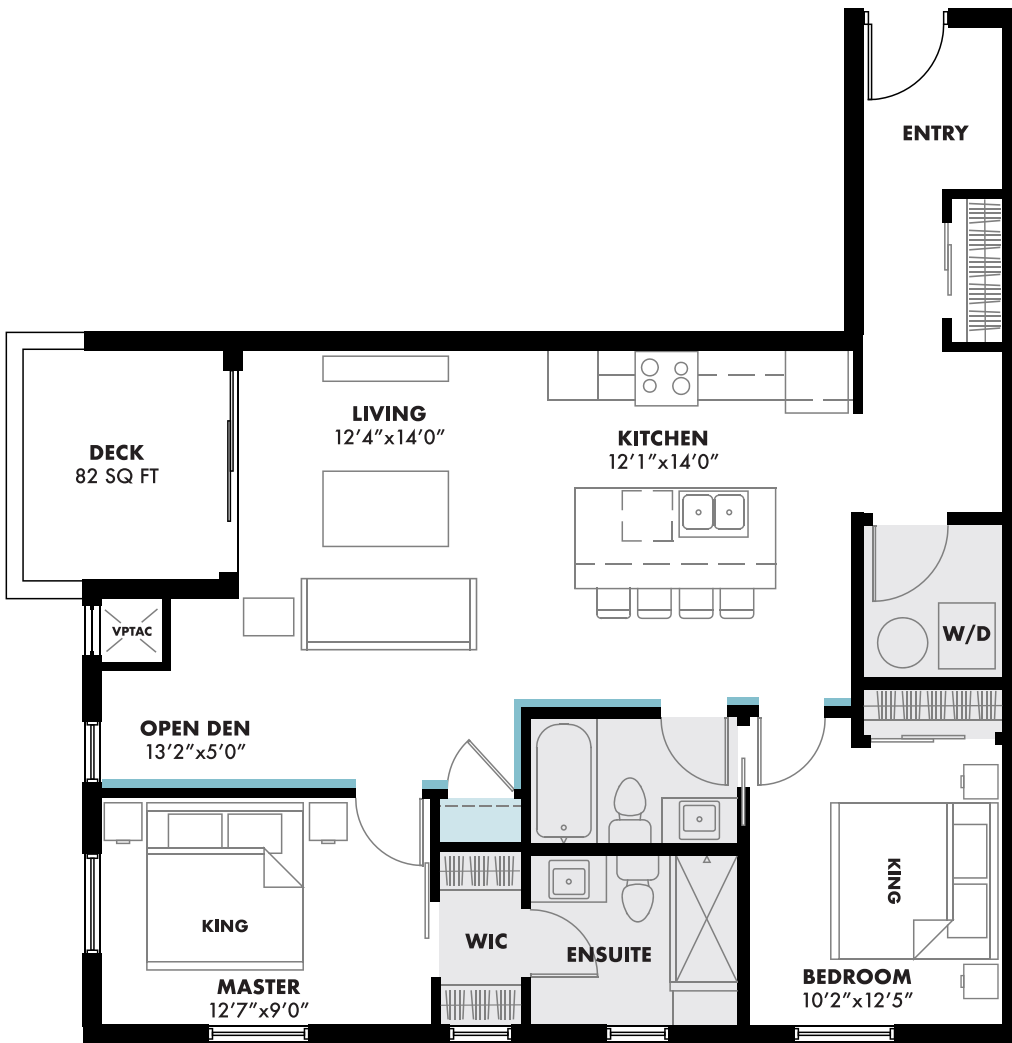




# B3

INDOOR LIVING **1063 SQ FT** | OUTDOOR LIVING **82 SQ FT** | OL / IL RATIO **8%** | TOTAL LIVING **1145 SQ FT**

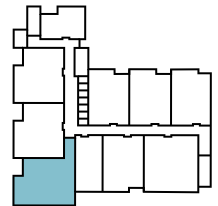
**BEDROOMS 2 | BATHROOMS 2**



FLOOR SIX



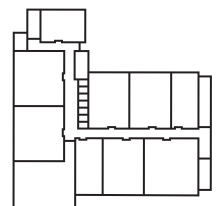
FLOOR FIVE



FLOOR FOUR



FLOOR THREE



FLOOR TWO

- 8' CEILING
- 9' CEILING
- FEATURE WALL UPGRADE
- PANTRY UPGRADE

\*VPTAC SIZE AND LOCATIONS MAY VARY. MEASUREMENTS ARE APPROXIMATE AND SUBJECT TO CHANGE

