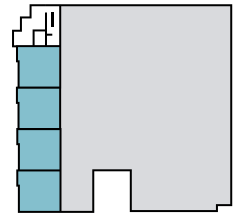
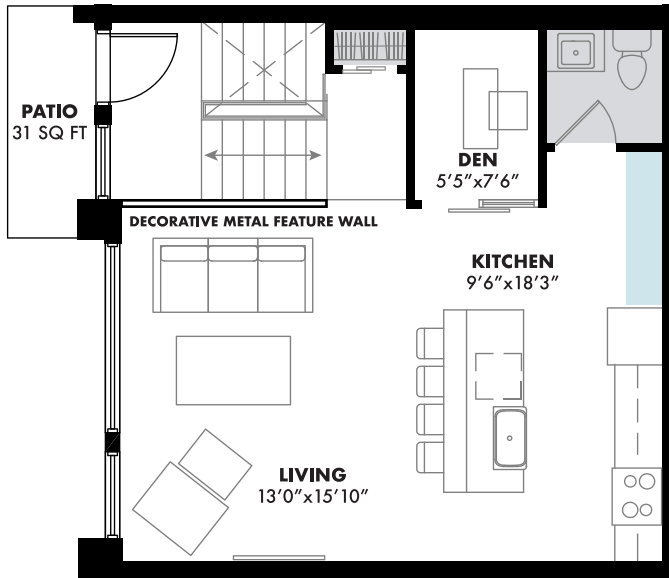




URBAN TOWNHOME

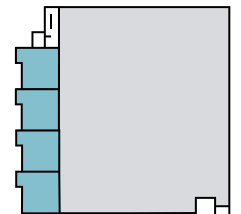
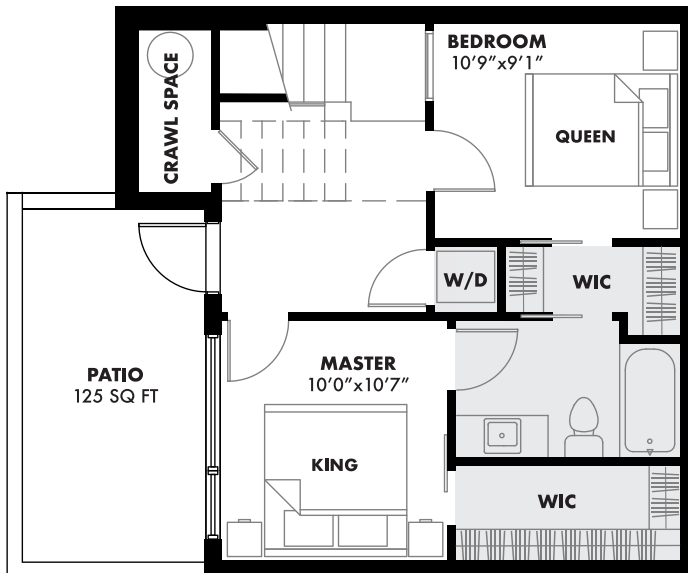
INDOOR LIVING 1075 SQ FT | OUTDOOR LIVING 156 SQ FT | OL / IL RATIO 15% | TOTAL LIVING 1231 SQ FT

BEDROOMS 2 + DEN | BATHROOMS 1.5



URBAN TOWNHOME

LEVEL TWO | 565 SQ FT



URBAN TOWNHOME

LEVEL ONE | 510 SQ FT



*VPTAC SIZE AND LOCATIONS MAY VARY. MEASUREMENTS ARE APPROXIMATE AND SUBJECT TO CHANGE